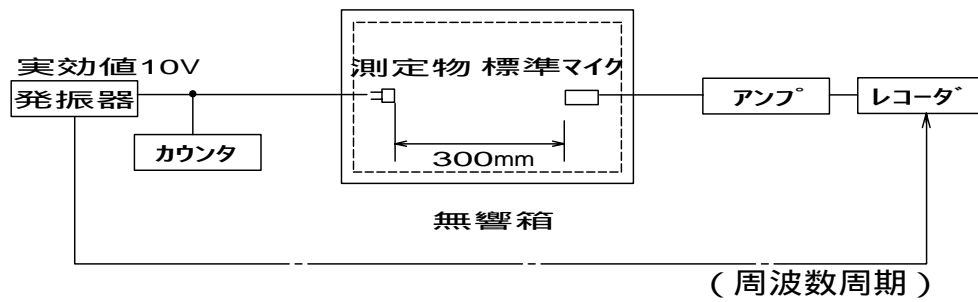
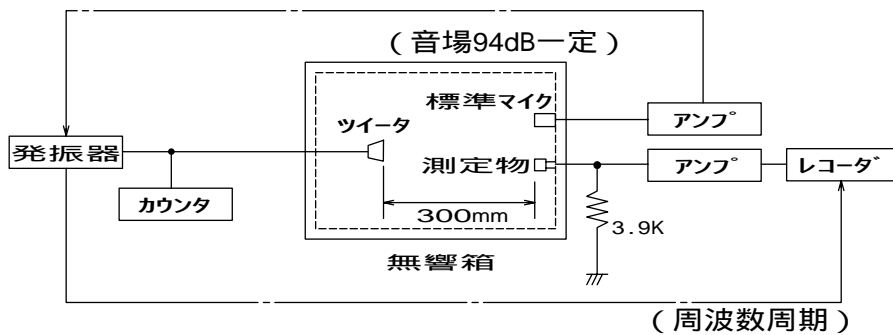


測定回路

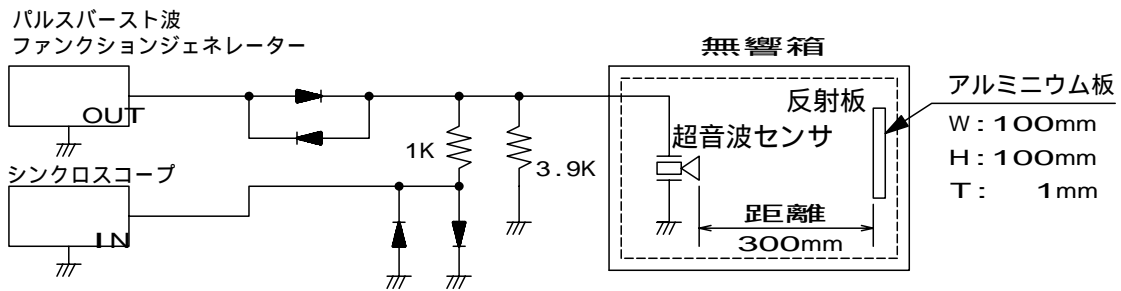
送信側 (音圧測定): $0\text{dB} = 0.0002 \mu\text{bar}$



受信側 (感度測定): $0\text{dB} = 1\text{V}/\mu\text{bar}$



反射感度測定 (型番: C40-16PU, C40-16U)
(基準レベル $0\text{dB} = \text{印加電圧 } 20\text{Vpp}$)



反射感度測定 (フラット型)

