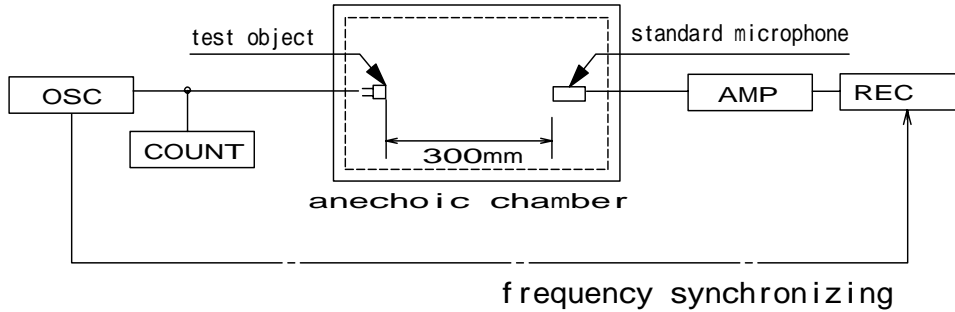
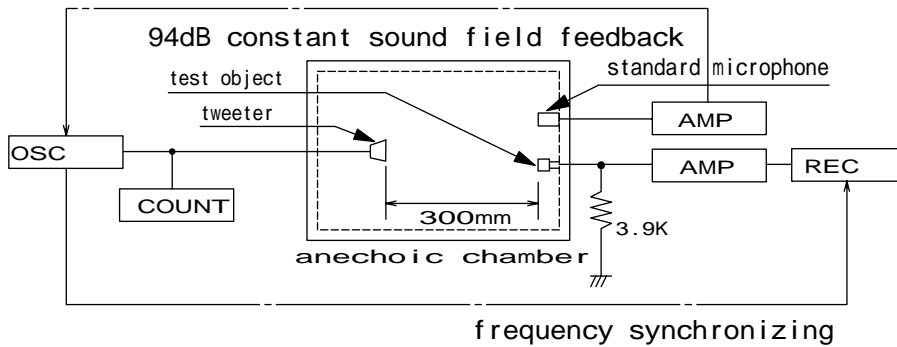


Test circuit

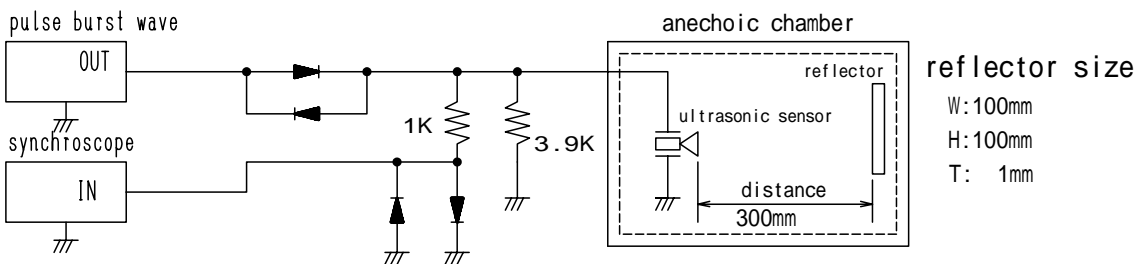
**Frequency characteristic
Transmitter(SPL) :0dB=0.0002 μ bar**



**Frequency characteristic
Receiver(sensitivity) :0dB=1V/ μ bar**



**Reflected sensitivity (model : C40-16PU, C40-16U)
(Standard level 0dB = Appended voltage 20Vpp)**



Reflected sensitivity (Flat type)

